

# LED Track Light

## Model. 521C-30W 6500K

### Part I: Production Introduction

#### ☆ Products Features

1. The track light is made by die-casting aluminum alloy, with good heat conduction, rust-proof. Powder coated treatment made it anti color fade.
2. Light source-Adopting high brightness and stable lighting source COB, non-radiation, no heavy metal pollution. LED chip with different color temperatures and chromatic rendering index up to CRI>80.
3. Power supply-Equipped with power factor driver with short-circuit protection and thermal protection function.
4. Colors-Available in white finish.
5. Reflector -High-performance aluminium optic made of planar circular facets framed in convex square sections to achieve uniform distribution and maximum visual comfort on worktop and pathway. Complete with extra-clear screen-printed methacrylate screen. 15°-18° optic.
6. Energy saving.

#### ☆ Application :

Widely used in shopping malls (clothing stores, furniture stores and other exclusive stores), car show, jewelry, star hotel, brand clothing, high-end clubs, museum, chain stores, brand business offices, professional windows, counters and other lighting situations, it is an ideal light to replace the traditional halogen and metal halide light.

### Part II: Technical Parameter

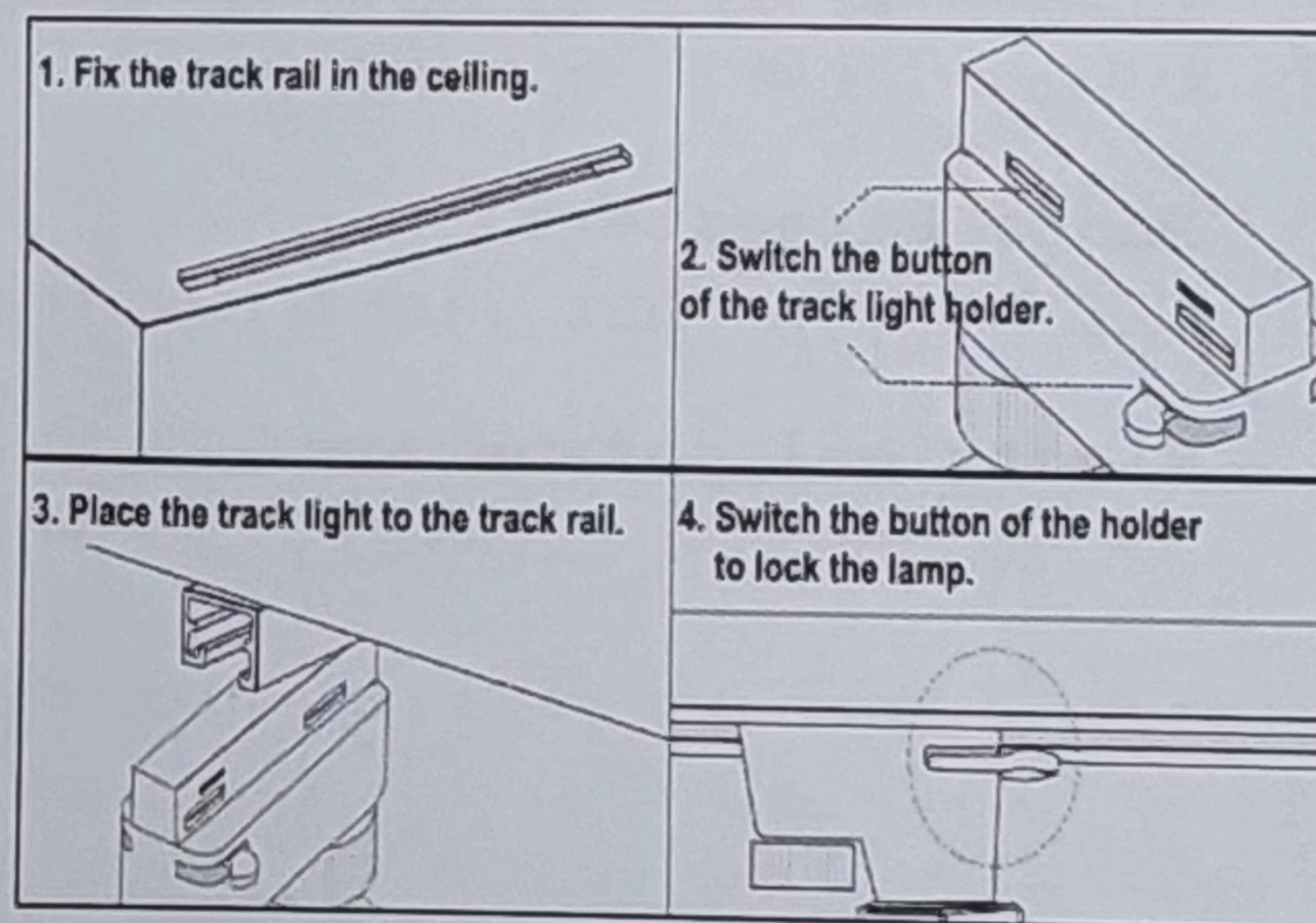
Model	LED Power	Luminous Flux	Input Voltage	Beam Angle	IP Rate	CRI	Housing Color
521C	30W	3000LM	AC85-265V 50-60Hz	15°-18°	20	>80Ra	White Finish

### Part III :Notes

- ⚠ The product must be installed by the professionals. Please be sure to cut off the power before installation and maintenance to ensure safety.
- ⚠ When installing this product, do not perforate or modify any parts of the surrounded by the wire or the electronic components, Make sure that the products are intact.
- ⚠ In order to protect the wire. Please put the wire away from the sharp edges of metal or other objects.  
This product can be connected with the normal wire. Can not supply the power for other electrical equipment.
- ⚠ If you need any further information, please contact with the retailer, distributor.
- ⚠ It is live and dangerous, no touch by the children.

### Part IV Instructions For Assemble

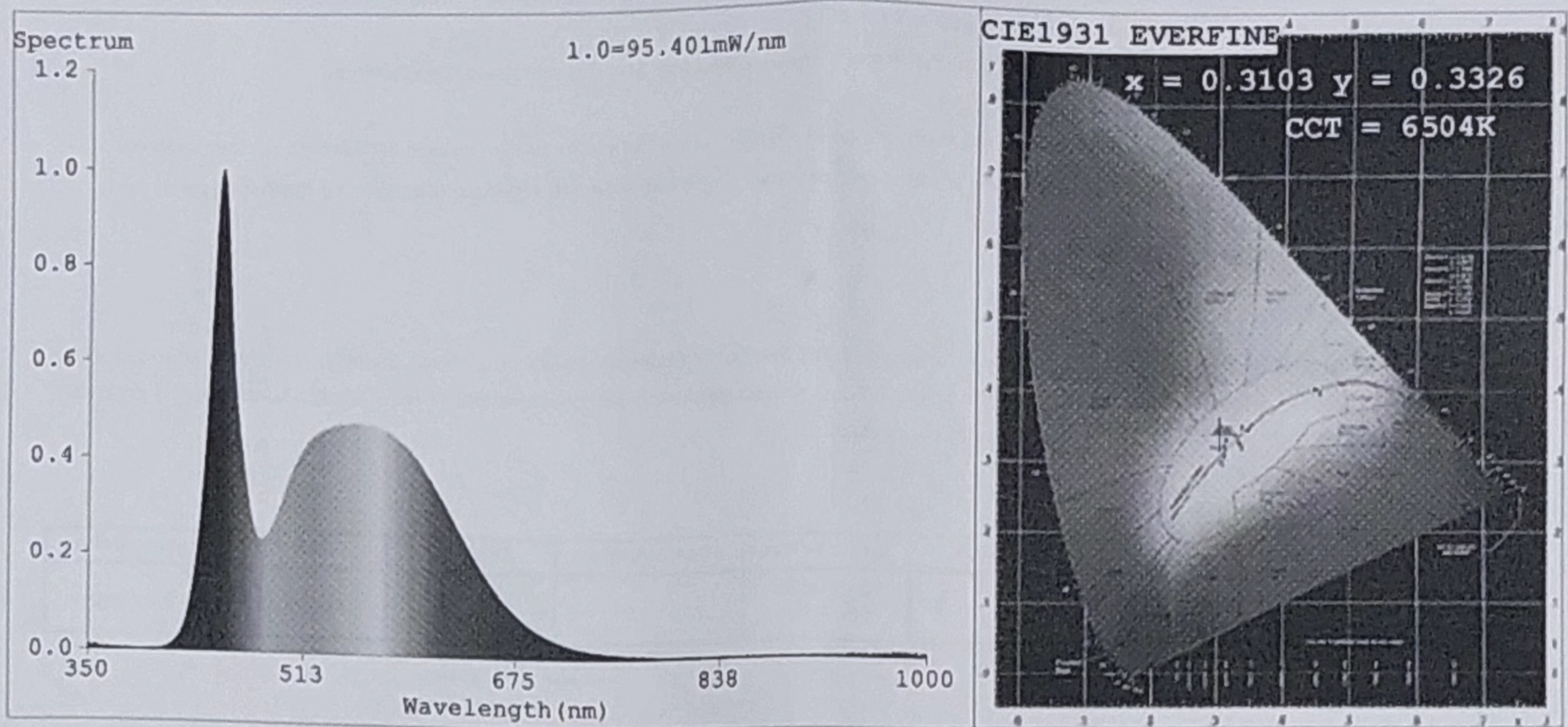
1. Look at the right picture, after cut off the power, then connect the line, be sure safe. then install it.
2. Make sure all is ok then turn on it.
3. If any Abnormal condition, please cut off the power immediately. Stop using, and contact local distributor.
4. If there is any quality issue or more information needed, please kindly contact with the local distributor.





# Spectrum Test Report

Model. 521C-30W 6500K



### Color Parameters:

Chromaticity Coordinate:  $x=0.3103$   $y=0.3326$   $u'=0.1949$   $v'=0.4699$

CCT=6504K (Duv=0.0062) Dominant WL:Ld =491.3nm Purity=7.8%

Ratio:R=12.8% G=81.7% B=5.5% Peak WL:Lp=450.5nm FWHM=22.4nm

Render Index:Ra=81.4

R1 =79	R2 =85	R3 =90	R4 =81	R5 =80	R6 =80	R7 =88	
R8 =68	R9 =0	R10=66	R11=80	R12=57	R13=80	R14=95	R15=73

### Photo Parameters:

Flux = 3103 lm Eff. : 102.14 lm/W Fe = 9.331 W

### Electrical parameters:

V = 220.63 V I = 0.1445 A P = 30.38 W PF = 0.953

Status: Integral T = 5 ms Ip = 51797 (79%)