



## Enclosures and mounting boxes: Flush mounting box 6-7M light blue

### V71306

Enclosures and mounting boxes / Flush mounting boxes / For masonry walls

### Flush mounting box 6-7M light blue

6-7-module flush mounting box (GW 650 °C), for masonry walls, light blue

- Plenty of space of internal wiring
- Knockouts designed for the insertion of pipes with various cross-sections
- Rack for fixing the dividing screen (patented)
- Fixing lug of the support screws with zinc-plating treatment to prevent the thread from clogging during installation and favour screwing
- Accessories available: anti-mortar covers and coupling joints to create multiple series of boxes



### Product Status

3 - Active

### Minimum order quantity

6 NR

You may also be interested in



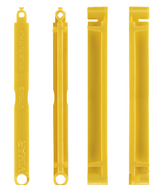
V71306.AU - Flush mounting box 6-7M black



V71326 - Antimortar cover for flush-mount box 6M

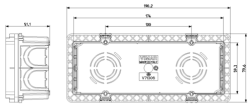


V71550 - Dividing screen for flush-mount box yell



V71563 - Joint plate for flush-mount boxes yellow

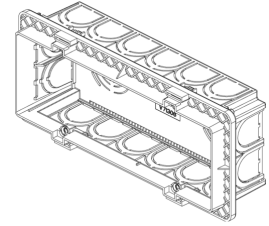
## Drawings



Space view



Backside view



3D View

## Technical data

- **Class group:** Connection devices
- **Class:** Box/housing for built-in mounting in the wall/ceiling
- **Mounting method:** Flush mounted (plaster)
- **Shape:** Rectangular
- **Construction type:** Device connection box (round/square)
- **Model:** Other
- **Provided with revolving ring:** No
- **Connectable:** Yes
- **Equipped with:** None
- **Diameter:** 0 mm
- **Length:** 59,00 mm
- **Width:** 174,00 mm
- **Depth:** 0,00 - 49,60 mm
- **Internal depth:** 50,00 mm
- **For number of electric fittings:** 7
- **Mounting switching equipment:** Screwing
- **With screws:** No
- **Housing feed-through by break-out opening:** Yes
- **Housing feed-through by seal membrane:** No
- **Housing feed-through by nozzle:** No
- **Housing feed-through by step membrane:** No
- **For tube diameter:** 20/25 mm
- **Pipe locking:** No
- **Pipe locking optional:** No
- **Inlet from the rear:** Yes
- **Number of inlets:** 9
- **Number of included spouts:** 0
- **Material:** Plastic
- **Halogen free:** Yes
- **Surface protection:** Untreated
- **Colour:** Blue
- **Degree of protection (IP):** IP00
- **Cover model:** None
- **Transparent cover:** No
- **Cover attachment:** Screwed
- **Sealable:** No
- **Circuit integrity:** None
- **With screening:** No
- **Air tight:** No
- **Max. conductor cross section:** 0
- **Number of poles of the clamp:** 0
- **Clamp position fixed:** No
- **Luminaire hook mounting:** No
- **Nozzle:** None
- **With nail lugs:** No
- **Special application:** None

## Certifications

- 00. CE Marking - EU
- 01. IMQ - Italy ([download](#))
- 15. CCC - China ([download](#))
- 37. Marking - Morocco
- 43. UKCA mark - Great Britain
- 96. Electrotechnical expert ([download](#))

## Packaging



8 007352 079526

**Code** 8007352079526  
**Quantity** 1 NR  
**Dim.** 18.4x9x5 [cm]  
**Weight** 60 [g]



8 007352 079533

**Code** 8007352079533  
**Quantity** 6 NR  
**Dim.** 18.4x9x30 [cm]  
**Weight** 367.27 [g]



8 007352 079540

**Code** 8007352079540  
**Quantity** 48 NR  
**Dim.** 62x26x30 [cm]  
**Weight** 3,547.33 [g]

## Legal

Vimar reserves the right to change at any time and without notice the characteristics of the products reported. Installation should be carried out by qualified staff in compliance with the current regulations regarding the installation of electrical equipment in the country where the products are installed. For the terms of use of the information on the product info sheet see [Conditions of Use](#).