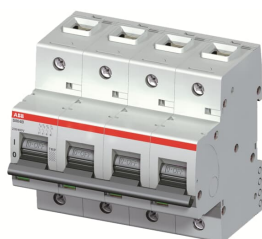


PRODUCT-DETAILS

# S804B-C80

## S804B-C80 High Performance MCB



### General Information

Extended Product Type	S804B-C80
Product ID	2CCS814001R0804
EAN	7612271416416
Catalog Description	S804B-C80 High Performance MCB

### Long Description

The S804B-C80 is a 4-pole High Performance Circuit breaker with C-characteristic, with cage terminal and a rated current of 80 A. It is a current limiting device with a maximum breaking capacity of 16kA at 230/400V. It can be used for voltages up to 230/400V. It has two different tripping mechanisms, the thermal tripping mechanism for overload protection and the electromechanic tripping mechanism for short circuit protection. The S804B-C80 complies with IEC/EN 60947-2 and EN 60898-1 and allows the use for residential, commercial and industrial applications. It has numerous of approvals, therefore it can be used worldwide. The extensive range of accessory makes the use of S804B-C80 more comfortable. Due to the fast arc extinction of S804B-C80 your application will be secured.

### Technical

Standards	IEC/EN 60947-2, IEC/EN 60898-1
Tripping Characteristic	C
Rated Voltage ( $U_r$ )	acc. to IEC 60947-2 400 V AC acc. to IEC 60947-2 300 V DC acc. to IEC 60898-1 400 V AC
Rated Operational Voltage	acc. to IEC 60947-2 400 V AC acc. to IEC 60947-2 300 V DC acc. to IEC 60898-1 400 V AC
Rated Insulation Voltage ( $U_i$ )	acc. to IEC/EN 60664-1 500 V AC
Rated Impulse Withstand Voltage ( $U_{imp}$ )	6 kV
Input Voltage Type	AC/DC

Rated Current ( $I_n$ )	80 A
Rated Operational Current ( $I_e$ )	80 A
Rated Short-Circuit Capacity	(400 V) 10 kA (230 V) 10 kA
Rated Ultimate Short-Circuit Breaking Capacity ( $I_{cu}$ )	(230 / 400 V AC) 16 kA (300 V DC) 10 kA
Rated Conditional Short-Circuit Current ( $I_{nc}$ )	(230 V) 16 kA (400 V) 16 kA
Rated Service Short-Circuit Breaking Capacity ( $I_{cs}$ )	(230 / 400 V AC) 10 kA
Frequency (f)	50...60 Hz
Rated Frequency (f)	50...60 Hz
Power Loss	25.6 W at Rated Operating Conditions per Pole 6.4 W
Contact Position Indication	ON / OFF / TRIP
Energy Limiting Class	3
Number of Poles	4
Number of Protected Poles	4
Overvoltage Category	III
Tightening Torque	3.5 N·m
Release Type	C
Actuator Marking	I / O
Housing Material	Insulation group I, RAL 7035
Mounting on DIN Rail	TH35-15 (35 x 15 mm Mounting Rail) acc. to IEC 60715 TH35-7.5 (35 x 7.5 mm Mounting Rail) acc. to IEC 60715
Mounting Position	Any
Recommended Screw Driver	Pozidriv 2
Accessories Available	Yes
Remarks	Connection from top and bottom Connecting with CU only IP40 in enclosure with cover Cage terminal with captIIIe screw
Connecting Capacity	Flexible 0...50 mm <sup>2</sup> Rigid 0...70 mm <sup>2</sup>
Terminal Type	Screw Terminals

## Environmental

Ambient Temperature	-25...60 °C
Ambient Air Temperature	Operation -25...60 °C
Reference Ambient Air Temperature	acc. to IEC60947-2 30 °C
Degree of Protection	IP20
Pollution Degree	3
RoHS Status	Following EU Directive 2011/65/EU
Environmental Information	2CCY413207D0203

## Dimensions

Width in Number of Modular Spacings	6
Product Net Width	106 mm
Product Net Height	95 mm
Product Net Depth / Length	82.5 mm
Product Net Weight	980 g
Built-In Depth ( $t_2$ )	82.5 mm

## Container Information

Package Level 1 Units	box 1 piece
Package Level 1 Width	105 mm
Package Level 1 Height	99 mm
Package Level 1 Depth / Length	111 mm
Package Level 1 Gross Weight	1010 g
Package Level 1 EAN	7612271416416

---

## Ordering

Minimum Order Quantity	1 piece
Customs Tariff Number	85362090
Country of Origin	Switzerland (CH)

---

## Certificates and Declarations (Document Number)

Declaration of Conformity - CE	2CCC005083D0202
Environmental Information	2CCY413207D0203
Instructions and Manuals	2CCC413016M0008
RoHS Information	9AKK107680A3903 2CCC005083D0202

---

## Popular Downloads

Data Sheet, Technical Information	2CCC413003C0208
Instructions and Manuals	2CCC413016M0008

---

## Classifications

ETIM 7	EC000042 - Miniature circuit breaker (MCB)
ETIM 8	EC000042 - Miniature circuit breaker (MCB)
EPLAN Catalog Tree	Electrical engineering / Protection devices / General
WEEE Category	5. Small Equipment (No External Dimension More Than 50 cm)
WEEE B2C / B2B	Business To Business
CN8	85362020
eClass	V11.0 : 27141901
Object Classification Code	F

---

## Categories

Low Voltage Products and Systems → Modular DIN Rail Products → High Performance Circuit Breakers HPCBs

