

# INGCO

## Drywall Screwdriver

**EN** Drywall Screwdriver



**ESD5501 UESD5501 ESD5501-6**  
**ESD5501S ESD5501-8**



## TOOL USE AND CARE

- **Use clamps or other practical way to secure and support the workpiece to a stable platform.**  
Holding the work by hand or against your body is unstable and may lead to a loss of control.
- **Do not force tool.** Use the correct tool for your application. The correct tool will do the job better and safer and the rate for which it is designed.
- **Do not use tool if switch does not turn it on or off.** Any tool that cannot be controlled with the switch is dangerous and must be repaired.
- **Disconnect the plug from the power source before making any adjustments, changing accessories, or storing the tool.** Such preventative safety measures reduce the risk of starting the tool accidentally.
- **Store idle tools out of reach of children and other a untrained persons.** Tools are dangerous in the hands of untrained users.
- **Maintain tools with care. Keep cutting tools sharp and clean.** Properly maintained tools, with sharp cutting edges are less likely to bind and are easier to control.
- **Check for misalignment or binding of moving parts, breakage of parts, and any other condition that may affect the tools operation.** If damaged, have the tool serviced before using. Many accidents are caused by poorly maintained tools.
- **Use only accessories that are recommended by the manufacturer for your model.** Accessories that may be suitable for one tool, may become hazardous when used on another tool.

## SERVICE

- **Tool service must be performed only by qualified repair personnel.** Service or maintenance performed by unqualified personnel could result in a risk of injury.
- **When servicing a tool, use only identical replacement parts.** Follow instructions in the Maintenance section of this manual. Use of unauthorized parts or failure to follow Maintenance Instructions may create a risk of electric shock or injury.

## Additional Safety Rules

- **Hold tool by insulated gripping surfaces when performing an operation where the cutting tool may contact hidden wiring or its own cord.** Contact with a :live: wire will make exposed metal parts of the tool :live: and shock the operator.
- **Keep handles dry, clean, free from oil and grease.** It is recommended to use rubber gloves. This will enable better control.
- **DO NOT TOUCH ANY METAL PARTS OF THE TOOL** when drilling or driving into walls, floors or wherever live electrical wires may be encountered. Hold the tool only by insulated grasping surfaces to prevent electric shock if you drill or drive into a live wire.

## Specification

Model No.	ESD5501	ESD5501-6 (ISRAEL Plug)	ESD5501-8 (BS Plug)	ESD5501S (SAA Plug)	UESD5501
Rated power input	550W				550W
Rated voltage	220-240V~50/60Hz				110-120V~60Hz
No-load speed	0-2500/min				0-2500/min
Chuck diameter	6.35mm(1/4")				6.35mm(1/4")
Weight	2.0Kgs				2.0Kgs

### Switch

To start tool, depress the trigger switch. To stop tool, release the switch. The variable speed trigger switch permits speed control. The farther the trigger switch is depressed, the higher the speed of the Tool.

To lock the switch in the on position for continuous operation, depress the trigger switch and push up the locking button. The tool will continue to run. To turn the tool off, from a locked on condition, squeeze and release the trigger once. Before using the tool (each time), be sure that the locking button release mechanism is working freely. Be sure to release the locking mechanism before disconnection the plug from the power supply. Failure to do so will cause the tool to start immediately the next time it is plugged in. Damage or injury could result. The reversing lever is used to reverse the tool for backing out screws. It is located above the trigger. To reverse the screwdriver, turn it off and push the reversing lever to the right(when viewed from the back of the tool). To position the lever for forward operation, turn the tool off and push the lever to the left.

### Dead Spindle Action

The screwdrivers provide a dead output spindle to permit fasteners to be located easily in the driving accessory. Clutches are held apart by light spring pressure permitting the driving clutch to rotate without turning the driven clutch and accessory. When sufficient forward pressure is applied to the unit, the clutches engage and rotate the spindle and accessories. A reversing switch makes it possible to drive or loosen either right or left hand screws.

### Accessory Assembly

The 6mm(1/4") hex drive ball lock chuck is used on all depth sensitive and drywall screwdrivers. Assemble accessories by engaging the hex spindle and tapping lightly on the accessory until it snaps in place. Usually pliers are required to remove the accessory by pulling forward.

### Depth Adjustment Units

#### TO CHANGE BIT HOLDERS:

1. Pull forward on adjustment collar and remove from clutch housing.
2. Pull bit holder straight out with pliers if it is difficult to remove.
3. Push new bit holder into spindle until ball lock snaps in groove in bit holder shank.
4. Replace adjustment collar by snapping over retaining ring.

**NOTE:** Align ribs on inside of depth locator with grooves in clutch housing before snapping into place.

#### CHANGING BIT TIP

1. Pull forward on adjustment collar and remove it from clutch housing
2. Use pliers to remove worn bit and install new bit tip.

#### DEPTH ADJUSTMENT:

Follow the graphic on the collar to increase or decrease the fastening depth. To seat the screw deeper in the workpiece, turn the adjustment collar to the right. To seat the screw higher in the workpiece, turn the adjustment collar to the left.

## Maintenance

### CLEANING

With the motor running, blow dirt and dust out of all air vents with dry air at least once a week. Wear safety glasses when performing this operation. Exterior plastic parts may be cleaned with a damp cloth and mild detergent. Although these parts are highly solvent resistant, **NEVER** use solvents. Depth locator and adjustment collar should be removed and drywall dust blown out of the clutch housing area at least once a week.

### CHANGING CLUTCHES

1. Remove clutch housing by unscrewing (left hand thread)
2. Clamp tool or clutch housing in a resilient clamp. **USE CARE**, the clutch housing can be easily damaged.
3. Remove round clutch retaining rings with a very small screwdriver.

**NOTE:** If the output spindle slides toward inside of gear case, remove gear case and push output spindle forward to expose retaining ring groove. Reassemble dead spindle spring allowing no more than 1/4" projecting from end of spindle.

### LUBRICATION

All ball and needle bearings are factory lubricated for the life of the bearing.

### CLUTCH LUBRICATION

1. Remove clutch housing by unscrewing (left hand thread).
2. Lightly push clutch faces.

### Accessories

Recommended accessories for use with your tool are available at extra cost from your distributor or local service center.

**CAUTION:** The use of any non-recommended accessory may be hazardous.

### Important

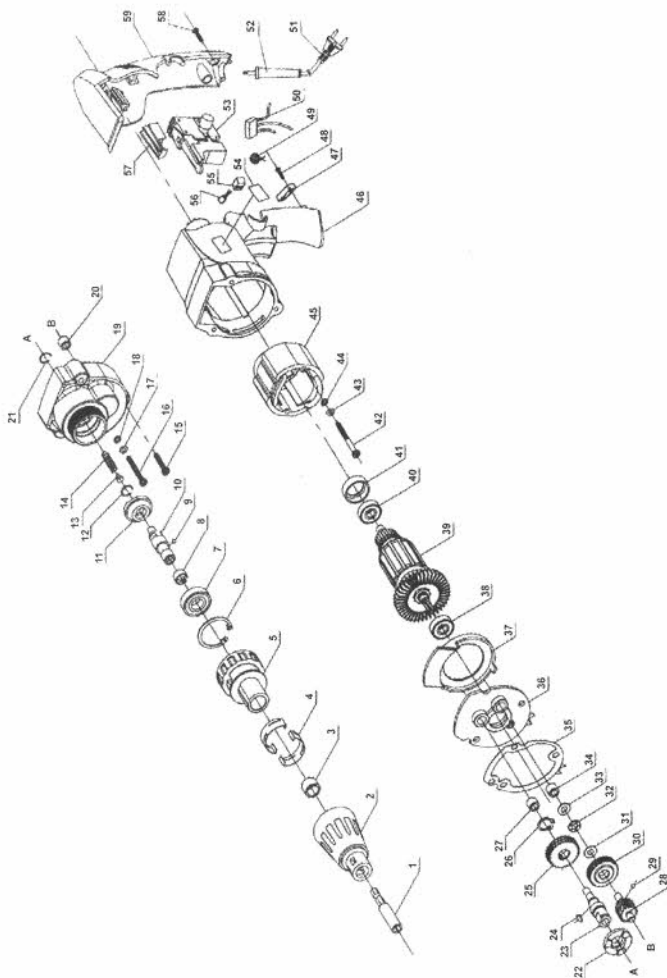
To assure product safety and reliability, repairs, maintenance and adjustment (including brush inspection and replacement) should be performed by authorized service centers or other qualified service organizations, always using identical replacement parts.

**INGCO****SPARE PART LIST****ESD5501,UESD5501,ESD5501-6,ESD5501-8,ESD5501S Spare Part List**

No	Part Description	No	Part Description
1	bit tip holder	31	washer a class gb/t8484
2	locator	32	bearing
3	bush	33	washer a class gb/t8484
4	metal plate	34	needle bearing
5	clutch housing	35	sel ring
6	retainning ring gb/t 893.1-198628	36	middle cover
7	ball bearing 6001-z	37	wind protector
8	located metal circle	38	ball bearing 608-z
9	steel ball	39	armature
10	spindle i	40	ball bearing 608-z
11	clutch	41	shockproof ring
12	retainning ring gb/t 896.2-198612	42	screw gb/t 845st4.2*50
13	guide	43	washer a class gb /t8484
14	spring	44	spring washer gb/t934
15	retainning ring gb/t 845st4.2*25	45	stator
16	retainning ring gb/t 845st4.2*40	46	housingbody
17	washer a class gb/t848 4	47	cord clamp
18	spring washer gb/t934	48	screw gb/t13806.2st4.2*14
19	gearing box	49	inductor
20	needle bearing	50	capacitor
21	retainning ring gb/t895.2-1986 12	51	cord&plug
22	clutch	52	cord protector
23	spindle ii	53	switch
24	key3*3.7*10gb/t1099-1979	54	nameplate
25	left bevel wheel	55	brush holder
26	retainning ring gb/t894.2-1986 10	56	carbon brush
27	needle bearing	57	sewitch fixed button
28	spindle gear	58	screw sets gb/t9074.18st4.2*18
29	steel ball	59	handle cover
30	right bebel wheel		

**INGCO** **EXPLODING VIEW**

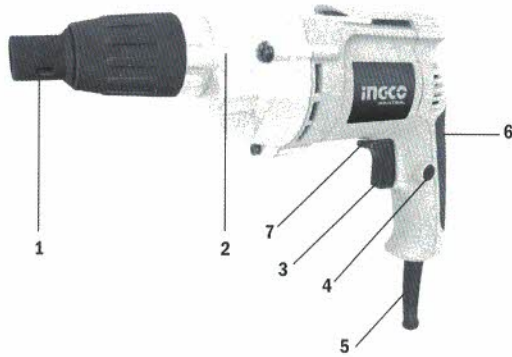
ESD5501,UESD5501,ESD5501-6,ESD5501-8,ESD5501S Exploding view



# INGCO

ESD5501,UESD5501,  
ESD5501-6,ESD5501-8,ESD5501S

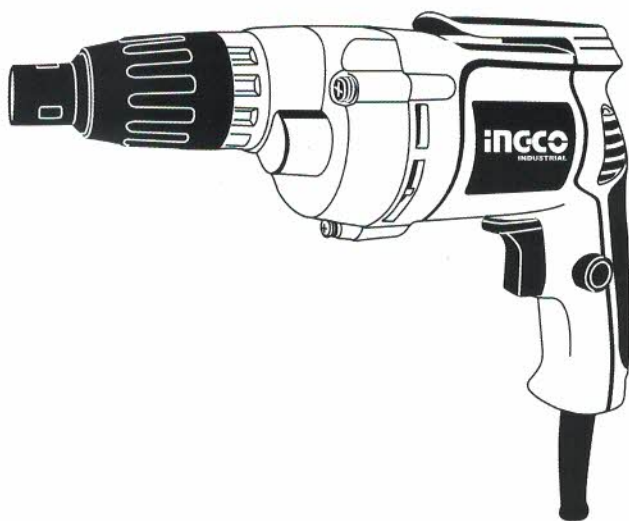
مفك 6مم موديل



- 1- طرف نظام الن
- 2- غلبة ترومن
- 3- مفتاح تشغيل وإيقاف
- 4- مفتاح تثبيت
- 5- حامي كداهل
- 6- يد كدوتش
- 7- مفتاح يمين وشمال

المنشأ صنع فى الصين

# INGCO



INGCO TOOLS CO., LIMITED  
[www.ingcotools.com](http://www.ingcotools.com)

MADE IN CHINA  
0516.V04

**ESD5501 UESD5501 ESD5501-6 ESD5501-8 ESD5501S**