
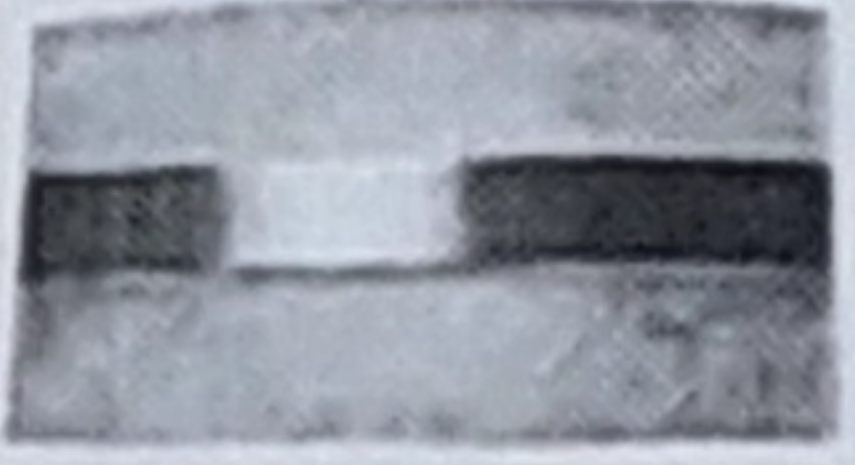

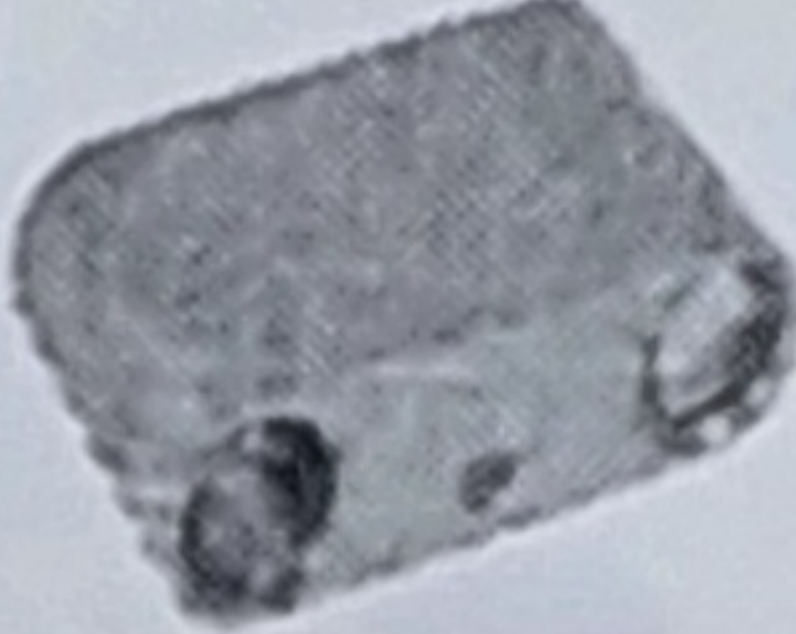



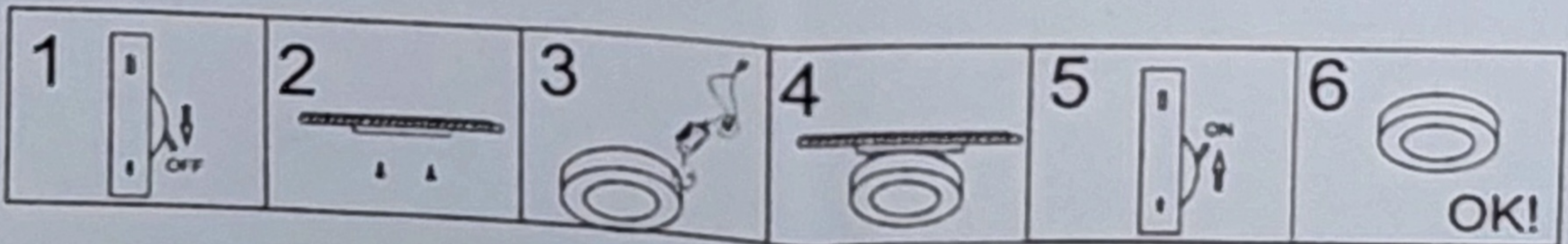


LED WALL LAMP

Model	Power	Luminous Flux	Voltage	Color	Picture
JL2017-10	10W	1000LM	85V-265V	Warmwhite	
JL2017B-10	10W	1000LM	85V-265V	Warmwhite	
JL2154-2	4W	400LM	85V-265V	Warmwhite	
JL2175-4W	4W	400LM	85V-265V	Warmwhite	
JL2020-4B	4W	400LM	85V-265V	Warmwhite	

Installation instructions:

1. Turn off the electricity.
2. Fixing the fixture on the mounting.
3. Connect cables to the gear.
4. Fix the lamp on the fixture.
5. turn on the electricity.
6. lamp works normally.



WARNING!

1. Cut off power before installation.
2. Can not be used as emergency light.
3. Nothing should cover the product.
4. The environment temperature of the lamp operation is -10°C to $+40^{\circ}\text{C}$.